



Brad Walker is a Certified Professional Crop Consultant. He's been consulting since 1985. He knows the corn will not always make 288 bu/Ac (like the Colorado Corn Contest winner in the picture), but he knows with Pest Match he can make the best recommendations possible. Brad has been the consultant on four first place winners in the Corn Growers Contest in Colorado and he recommends Pest Match.

With Pest Match©

- 1) You know all of your options.
- 2) You improve your efficiency; save time and money.
- 3) You make better recommendations.
- 4) You increase your bottom line.



Order **Pest Match** at
www.agskill.com

For Only
\$145.00 +
\$5.00 Shipping & Handling

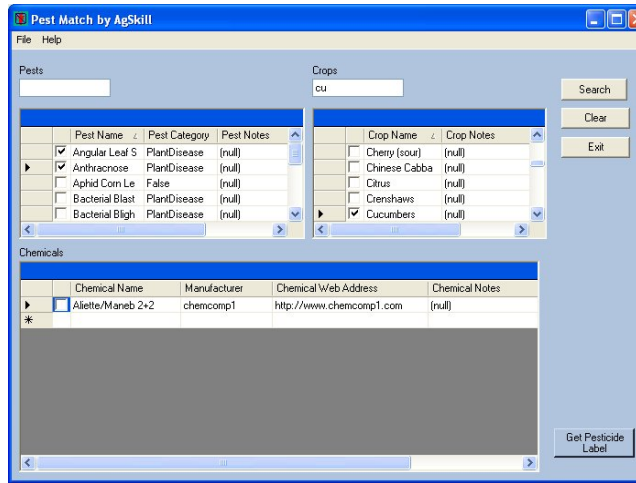


Is a computer program developed by AgSkill, Inc. that matches a pest and crop to a labeled pesticide.

AgSkill Inc.
710 S. Fourth St.
Lamar, Colorado, USA



- Pest Match is a computer program developed by AgSkill, Inc. that matches a pest and crop to a labeled pesticide.
- Pest Match can be used with most Windows operating systems (Windows 98, ME, 2000, XP Pro, or XP Home edition) on IBM Compatible Computers.
- The user simply selects a crop and a pest. The program will bring up a list of pesticides that are labeled for the selected pest and crop.
- The user also has the ability to select multiple pests within a given crop. The program will list all pesticides in common labeled for the pests in the indicated crop.
- Once the user has the pesticide list, they can review the pesticide Label in the Manufacture's Sample Label Reference Guide.
- If the user has Internet connectivity, the pesticide label can be retrieved from the manufacturer's website through a link in the program. It is as easy as clicking on the selected pesticide and then retrieving the pesticide label.
- The Internet is not mandatory; the program can be run without it.
- For more information go to our Web site at www.AgSkill.com

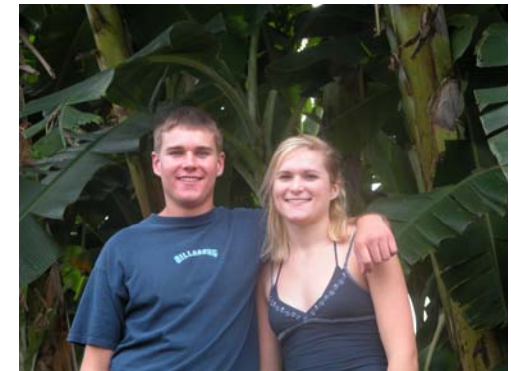


The Pest Match© Screen

The user can type in a Pest and Crop or click on a Pest and Crop. When search is clicked, the registered Pesticides will appear in the window. Then click on the pesticide and the Pest Match program will get the label from the manufacture's web site. In addition, a user can write notes in the space after the web address of the pesticide.



Do you know what is labeled for Pea Aphids in Alfalfa?



These Scouts are smiling, because they know what to apply to Bananas.



Make the best recommendation you can!